

# Attention !

The relays used must be interlocked

Terminal 1 + 2 + 3 = power supply from relay

Terminal 6 + 9 = safety circuit

Terminal 11 + 12 = end position

Terminal 14 + 15 = end position

External pushbuttons must be wired between terminal 9 + 11 respectively 9 + 14

Terminal 4 = Earth wire connection / PE

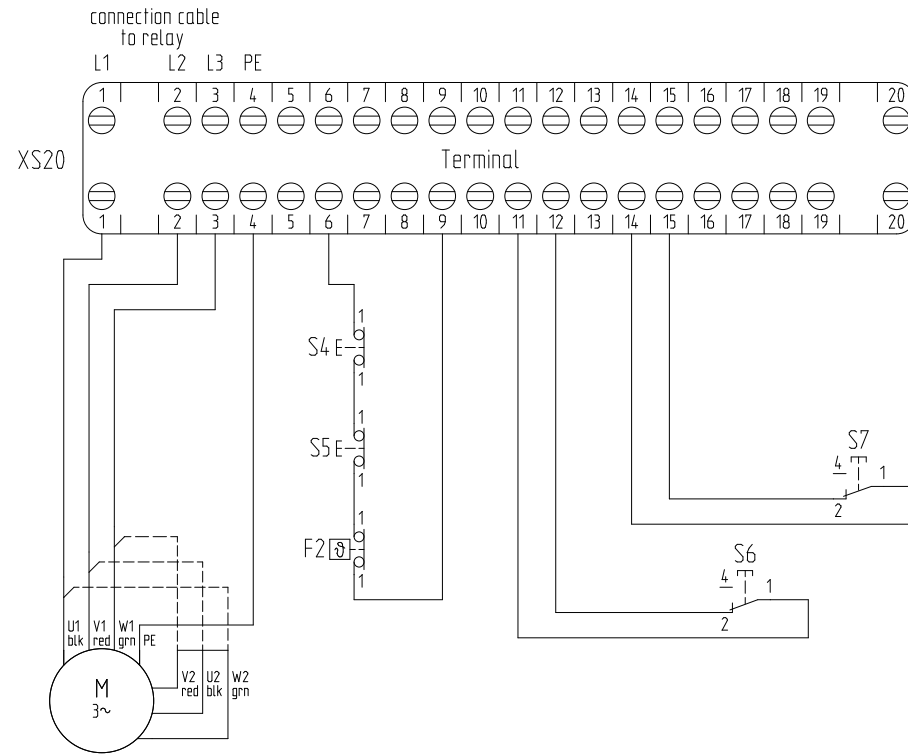
F2 = Thermal switch inside motor winding

S4 = Safety limit switch for end position S6

S5 = Safety limit switch for end position S7

S6 = limit switch

S7 = limit switch



3-phase AC motor

△ 230 Volt

Y 400 Volt

Voltage -----

Subject to technical changes

			Datum		01.12.2017		Framo Morat GmbH & Co. KG			Version 2			Projekt: Compacta		P-No. =cs2176					
			Bearb.		abe / bho		Höchst 7						V-No. +							
			Gepr.		bho		D-79871 Eisenbach			6-12-MS-LOE01			Projekt Nr. 2000000		Blatt 1					
Zustand			Änderung		Datum		Name		Norm		Urspr.		Ers. f.		Ers. d.		Zeichnung: cs2000.zng		von 1Bl.	
1	2	3	4	5	6	7	8	9	10	11	12	13	14	15	16					