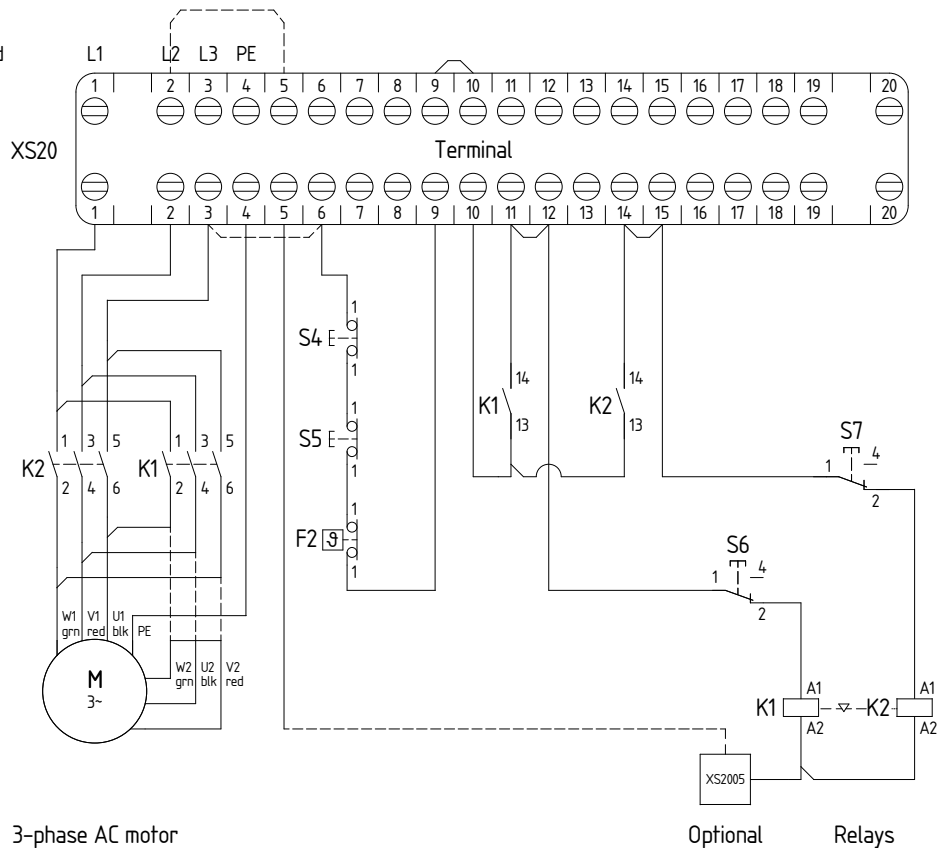


# Attention !

The relays are mechanical interlocked  
 The control unit as standard is locked  
 Remove jumpers between N° 11 + 12 and 14 + 15 for tip operation  
 If an Emergency Stop or a Stop button is installed, the jumpers between N° 9-10 must be removed

External pushbuttons are to be wired between N° 10 + 12 or 10 + 15

- K1 = relay for end position S6
- K2 = relay for end position S7
- F2 = Thermal switch inside motor winding
- S4 = Safety limit switch for end position S6
- S5 = Safety limit switch for end position S7
- S6 = limit switch
- S7 = limit switch



3-phase AC motor

230 Volt

400 Volt

Voltage -----

Optional Relays

~ 230 Volt

Voltage -----

Subject to technical changes

		Datum 28.03.2023		Framo Morat GmbH & Co. KG Höchst 7 D-79871 Eisenbach www.framo-morat.com		Version 1		Projekt: Compacta		P-No. =cs1032-45748	
		Bearb. abe / bho								V-No. +	
		Gepr. bho						Projekt Nr. :20000000		Blatt 1	
Zustand	Änderung	Datum	Name	Norm	Urspr.	Ers. f.	Ers. d.	Zeichnung: cs1000.zng		von 1 Bl.	
1		2		3		4		5		6	