

# Attention !

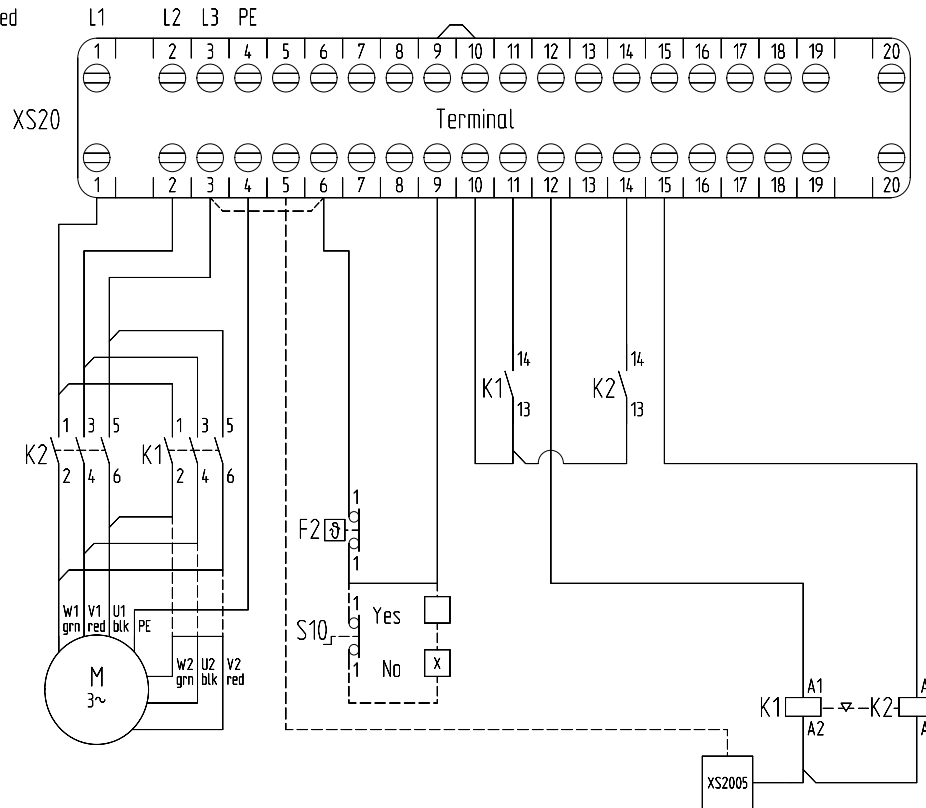
The relays are mechanical interlocked  
The control unit as standard is locked

If an Emergency Stop or a Stop button is installed, the jumpers between N° 9-10 must be removed  
K1 + K2 / 42-48 V/AC = jumper between N° 3 + 6 removed  
External pushbuttons are to be wired between N° 10 + 12 or 10 + 15

K1 = relay  
K2 = relay  
F2 = Thermal switch inside motor winding

S10 = Safety isolator switch for emergency hand crank

Option:  
- S10 emergency hand crank with push-in isolator switch



3-phase AC motor

Δ 230 Volt

Y 400 Volt

Voltage 3x480VAC

Optional Relays

~ 230 Volt

Voltage -----

Subject to technical changes

		Datum		26.11.2010		Framo Marat GmbH & Co. KG				Projekt: Compacta		P-No.		=cs1023	
		Bearb.		A.Beha / O.Trenkle		Höchst 7						V-No.		+	
		Gepr.		H.Henster		D-79871 Eisenbach				Projekt Nr. 20000000		Blatt 1			
Zustand		Änderung		Datum		Name		Norm		Urspr.		Ers. f.		Ers. d.	
1		2		3		4		5		6		7		8	
										Zeichnung: cs1000.zng		von		1Bl.	