

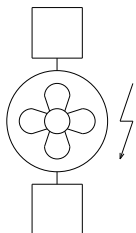
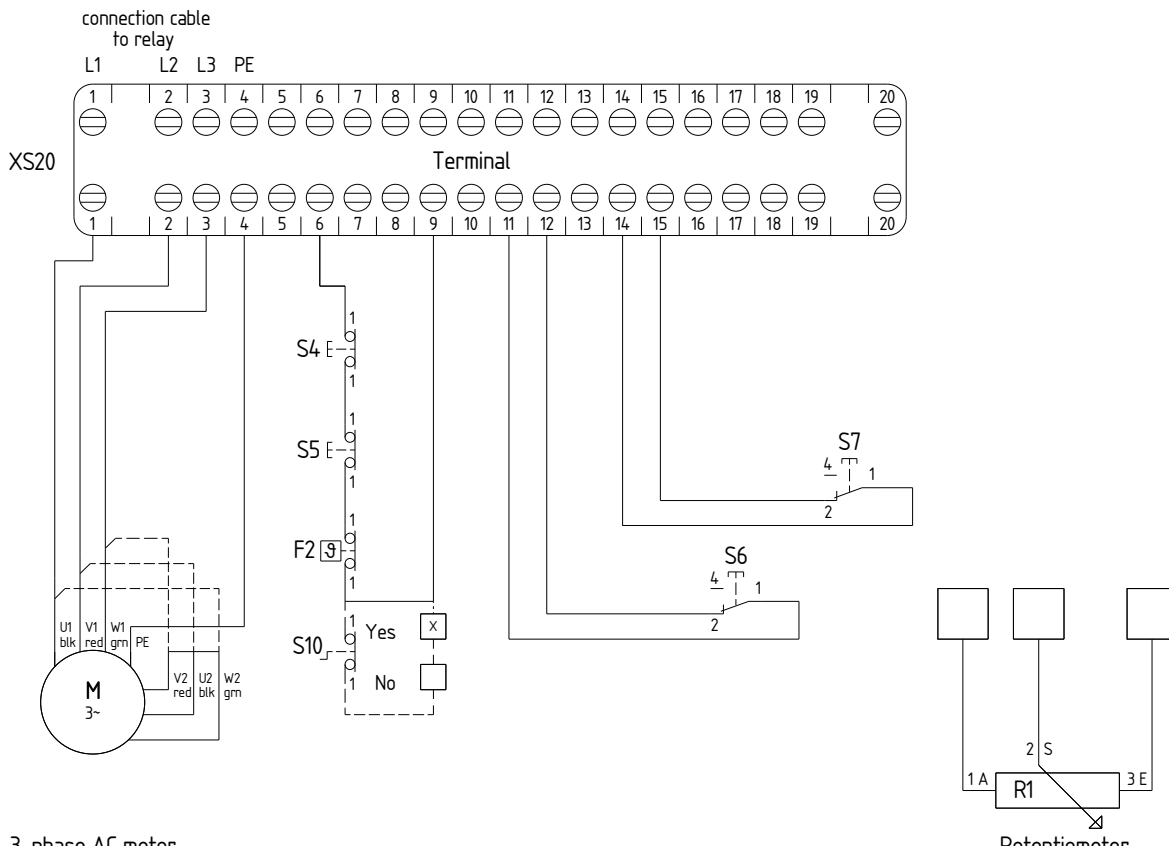
Attention !

The relays used must be interlocked
 Terminal 1 + 2 + 3 = power supply from relay
 Terminal 6 + 9 = safety circuit
 Terminal 11 + 12 = end position
 Terminal 14 + 15 = end position
 External pushbuttons must be wired between terminal 9 + 11 respectively 9 + 14
 Terminal 4 = Earth wire connection / PE

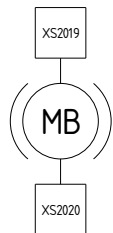
F2 = Thermal switch inside motor winding
 S4 = Safety limit switch for end position S6
 S5 = Safety limit switch for end position S7
 S6 = limit switch
 S7 = limit switch
 S10 = Safety isolator switch for emergency hand crank

Options:

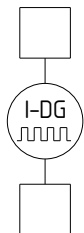
- S10 emergency hand crank with push-in isolator switch
- Motor brake 24 Volt/DC + 230 Volt/AC + 400 Volt/AC
- External ventilator with axial fan 230 Volt/AC for Compacta MS12
- Incremental-Encoder / different resolutions on request
- Potentiometer for actual value / different values on request



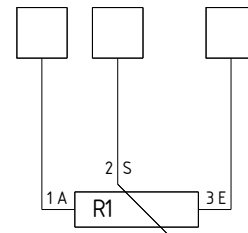
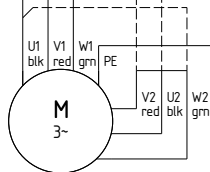
Connection



Connection



Connection



External ventilation

Yes
 No

Voltage _____

Motor brake

Yes
 No

Voltage 400VAC

Incremental-Encoder

Yes
 No

Resolutions _____

3-phase AC motor

Δ 230 Volt
 Y 400 Volt

Voltage _____

Potentiometer

Yes
 No

Value _____Ω

Connection data
 refer to supplement

Subject to technical changes

				Datum	19.10.2023	Framo Morat GmbH & Co. KG Höchst 7 D-79871 Eisenbach www.framo-morat.com				Version 2			Projekt: Compacta		P-No.	=c2147	
				Bearb.	abe / bho										V-No.	+13375	
				Gepr.	bho										Projekt Nr. :20000000		
				Urspr.											Blatt 1		
Zustand	Änderung	Datum	Name	Norm	Urspr.	Ers. f.	Ers. d.						Zeichnung: c2000.zng		von 1 Bl.		
1	2	3	4	5	6	7	8	9	10	11	12	13	14	15	16		