

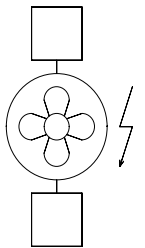
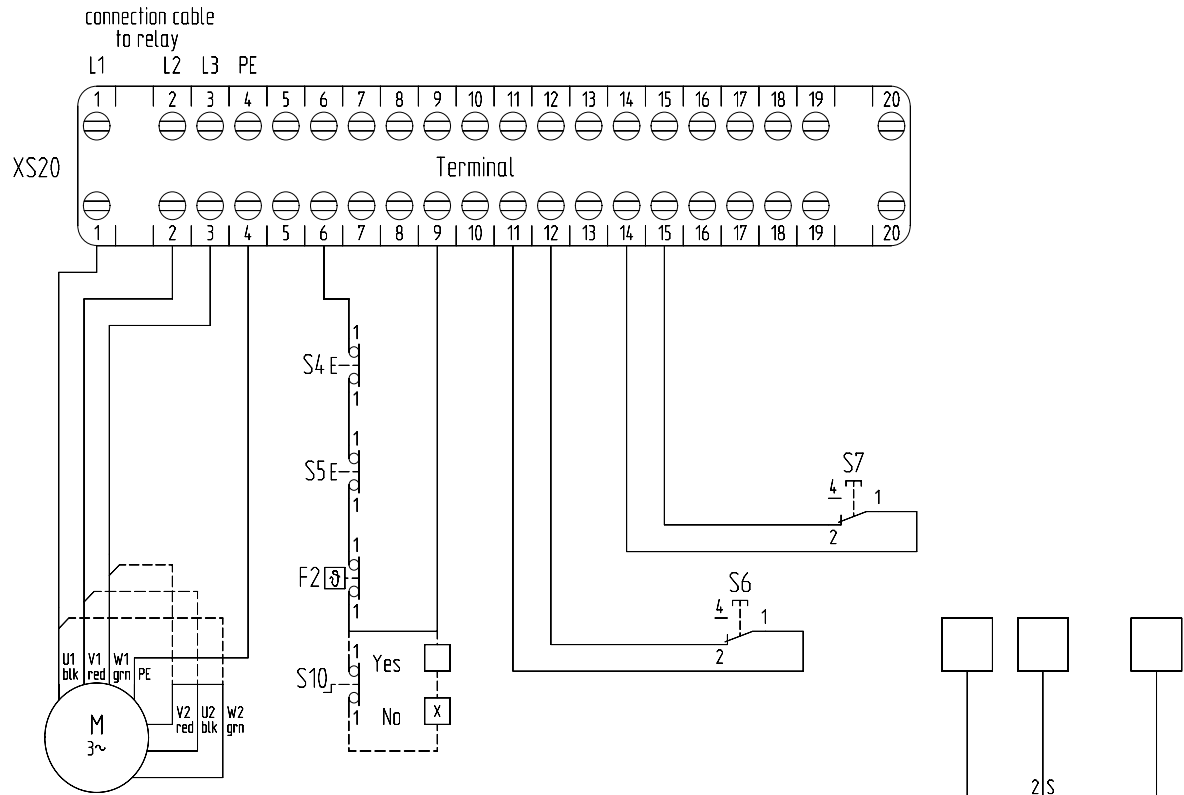
Attention !

- The relays used must be interlocked
- Terminal 1 + 2 + 3 = power supply from relay
- Terminal 6 + 9 = safety circuit
- Terminal 11 + 12 = end position
- Terminal 14 + 15 = end position
- External pushbuttons must be wired between terminal 9 + 11 respectively 9 + 14
- Terminal 4 = Earth wire connection / PE

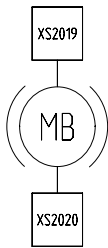
- F2 = Thermal switch inside motor winding
- S4 = Safety limit switch for end position S6
- S5 = Safety limit switch for end position S7
- S6 = limit switch
- S7 = limit switch
- S10 = Safety isolator switch for emergency hand crank

Options:

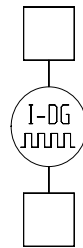
- S10 emergency hand crank with push-in isolator switch
- Motor brake 24 Volt/DC + 230 Volt/AC + 400 Volt/AC
- External ventilator with axial fan 230 Volt/AC for Compacta MS12
- Incremental-Encoder / different resolutions on request
- Potentiometer for actual value / different values on request



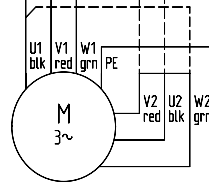
Connection



Connection



Connection



External ventilation

Yes
No

Motor brake

Yes
No

Incremental-Encoder

Yes
No

3-phase AC motor

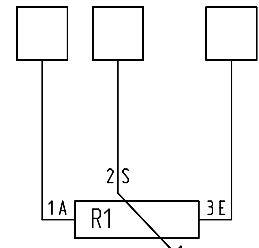
Δ 230 Volt
Y 400 Volt

Voltage -----

Voltage 230VAC

Resolutions -----

Voltage -----



Potentiometer

Yes
No

Value -----Ω

Connection data refer to supplement

Subject to technical changes

			Datum 26.03.2014		Frama Marat GmbH & Co. KG			Version 2			Projekt: Compacta		P-No. =c2131		
			Bearb. abe / otr		Höchst 7						V-No. +13375				
			Gepr. otr		D-79871 Eisenbach						Projekt Nr. 20000000		Blatt 1		
					www.frama-marat.com						Zeichnung: c2000.zng		von 1Bl.		
Zustand	Änderung	Datum	Name	Norm	Urspr.	Ers. f.	Ers. d.								
1	2	3	4	5	6	7	8	9	10	11	12	13	14	15	16