

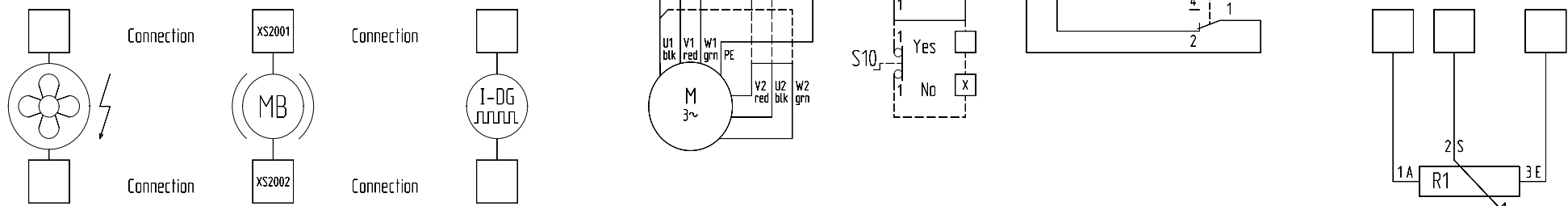
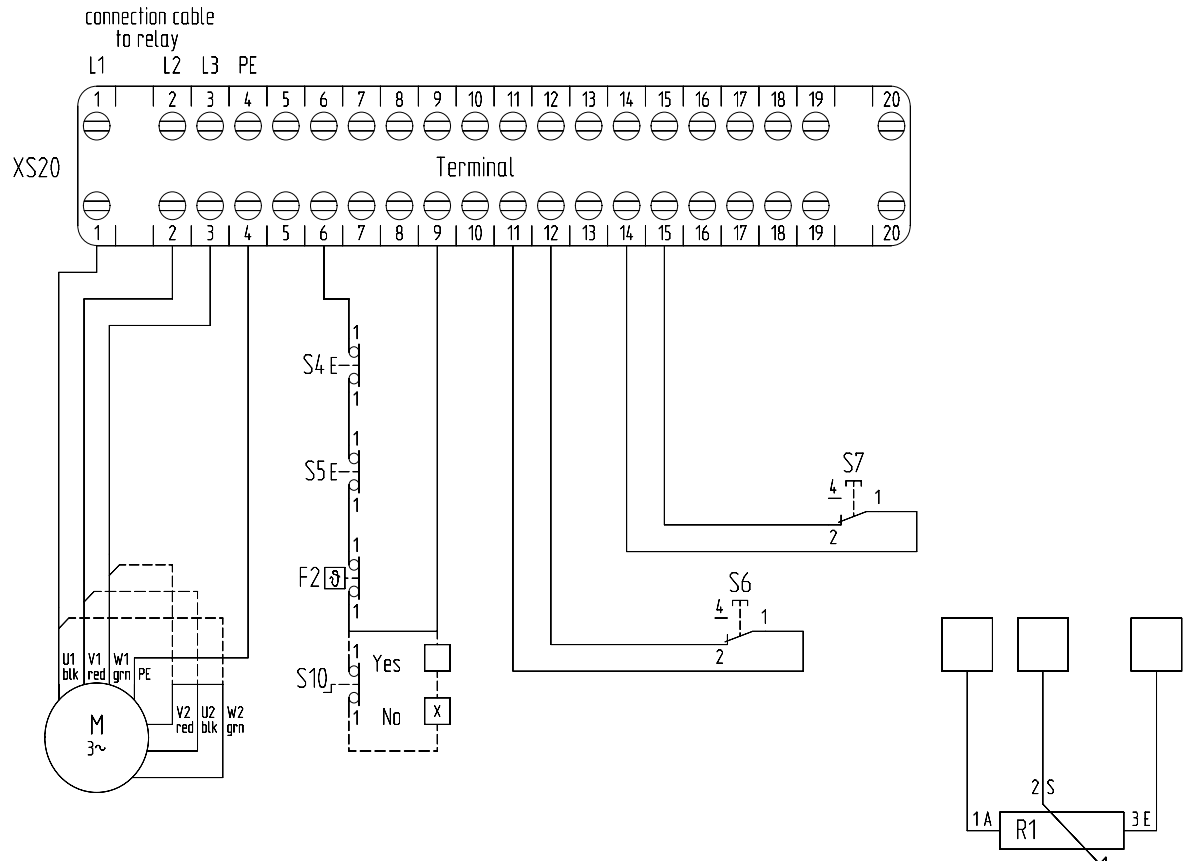
# Attention !

The relays used must be interlocked  
 Terminal 1 + 2 + 3 = power supply from relay  
 Terminal 6 + 9 = safety circuit  
 Terminal 11 + 12 = end position  
 Terminal 14 + 15 = end position  
 External pushbuttons must be wired between terminal 9 + 11 respectively 9 + 14  
 Terminal 4 = Earth wire connection / PE

F2 = Thermal switch inside motor winding  
 S4 = Safety limit switch for end position S6  
 S5 = Safety limit switch for end position S7  
 S6 = limit switch  
 S7 = limit switch  
 S10 = Safety isolator switch for emergency hand crank

## Options:

- S10 emergency hand crank with push-in isolator switch
- Motor brake 24 Volt/DC + 230 Volt/AC + 400 Volt/AC
- External ventilator with axial fan 230 Volt/AC for Compacta MS12
- Incremental-Encoder / different resolutions on request
- Potentiometer for actual value / different values on request



External ventilation	Motor brake	Incremental-Encoder	3-phase AC motor	Potentiometer
Yes <input type="checkbox"/>	Yes <input checked="" type="checkbox"/>	Yes <input type="checkbox"/>	Δ 230 Volt <input type="checkbox"/>	Yes <input type="checkbox"/>
No <input checked="" type="checkbox"/>	No <input type="checkbox"/>	No <input checked="" type="checkbox"/>	Y 400 Volt <input checked="" type="checkbox"/>	No <input checked="" type="checkbox"/>
Voltage -----	Voltage 400VAC	Resolutions -----	Voltage -----	Value -----Ω

Connection data refer to supplement

Subject to technical changes

				Datum	20.02.2014	Frama Marat GmbH & Co. KG Höchst 7 D-79871 Eisenbach www.frama-marat.com				Version 2			Projekt: Compacta		P-No.	=c2129	
				Bearb.	abe / otr									V-No.	+13375		
				Gepr.	otr							Projekt Nr. 20000000		Blatt 1			
Zustand	Änderung	Datum	Name	Norm	Urspr.	Ers. f.	Ers. d.					Zeichnung: c2000.zng		von 1Bl.			
1		2		3		4		5		6		7		8		9	