

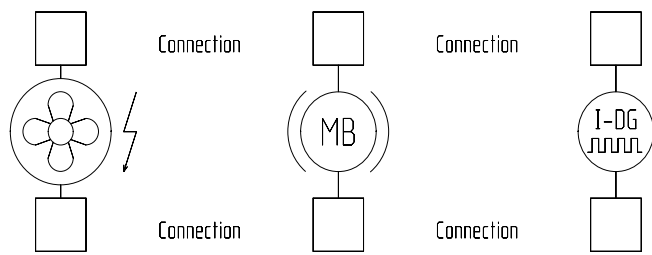
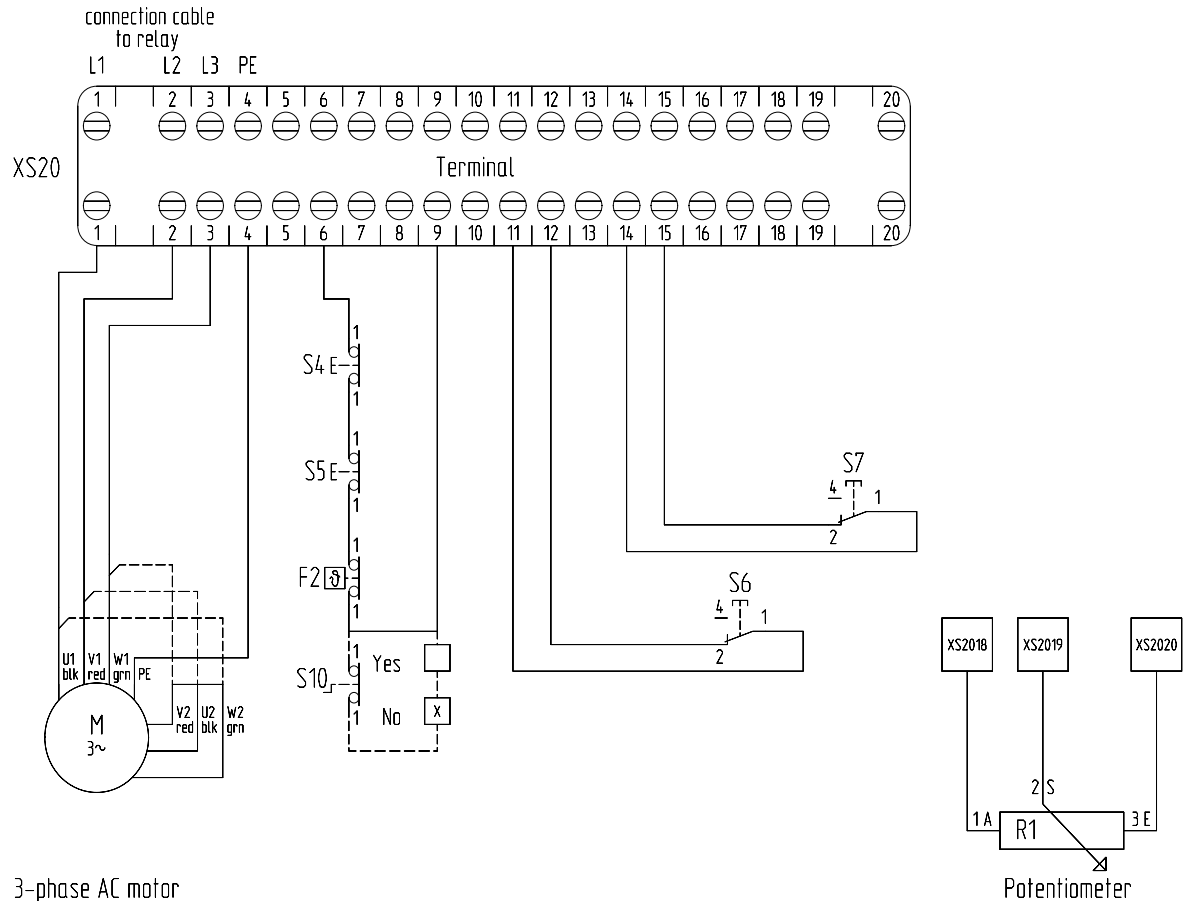
# Attention !

- The relays used must be interlocked
- Terminal 1 + 2 + 3 = power supply from relay
- Terminal 6 + 9 = safety circuit
- Terminal 11 + 12 = end position
- Terminal 14 + 15 = end position
- External pushbuttons must be wired between terminal 9 + 11 respectively 9 + 14
- Terminal 4 = Earth wire connection / PE

- F2 = Thermal switch inside motor winding
- S4 = Safety limit switch for end position S6
- S5 = Safety limit switch for end position S7
- S6 = limit switch
- S7 = limit switch
- S10 = Safety isolator switch for emergency hand crank

## Options:

- S10 emergency hand crank with push-in isolator switch
- Motor brake 24 Volt/DC + 230 Volt/AC + 400 Volt/AC
- External ventilator with axial fan 230 Volt/AC for Compacta MS12
- Incremental-Encoder / different resolutions on request
- Potentiometer for actual value / different values on request



External ventilation	Motor brake	Incremental-Encoder	3-phase AC motor
Yes <input type="checkbox"/>	Yes <input type="checkbox"/>	Yes <input type="checkbox"/>	Δ 230 Volt <input type="checkbox"/>
No <input checked="" type="checkbox"/>	No <input checked="" type="checkbox"/>	No <input checked="" type="checkbox"/>	Y 400 Volt <input type="checkbox"/>
Voltage -----	Voltage -----	Resolutions -----	Voltage 3x480VAC

Connection data refer to supplement

Subject to technical changes

				Datum 23.02.2011		Frama Marat GmbH & Co. KG Höchst 7 D-79871 Eisenbach www.frama-marat.com			Version 2			Projekt: Compacta		P-No. =c2092	
				Bearb. abe / otr									V-No. +13375		
				Gepr. otr							Projekt Nr. 20000000		Blatt 1		
Zustand	Änderung	Datum	Name	Norm	Urspr.	Ers. f.	Ers. d.					Zeichnung: c2000.zng		von 1Bl.	
1	2	3	4	5	6	7	8	9	10	11	12	13	14	15	16