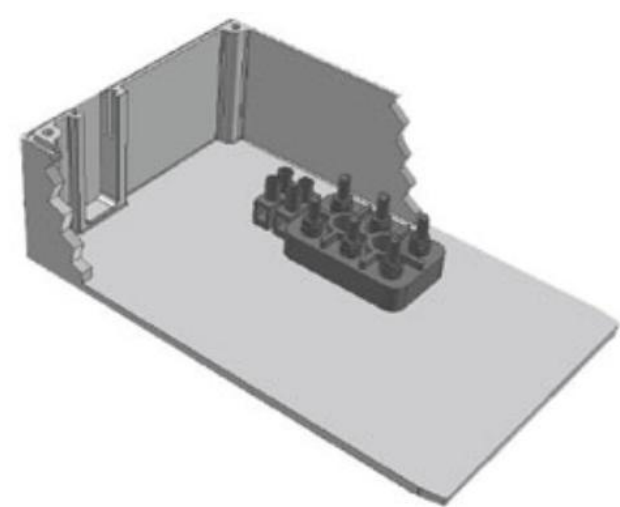
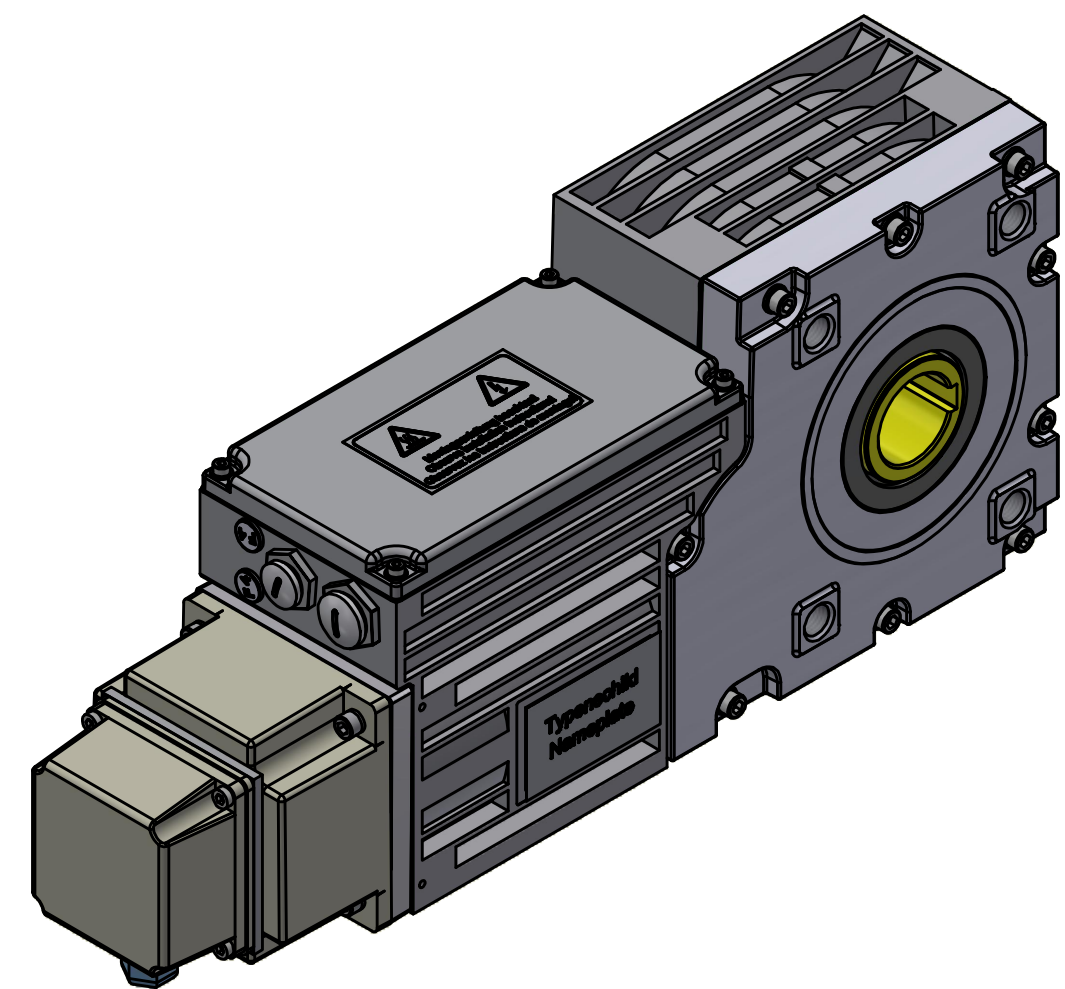


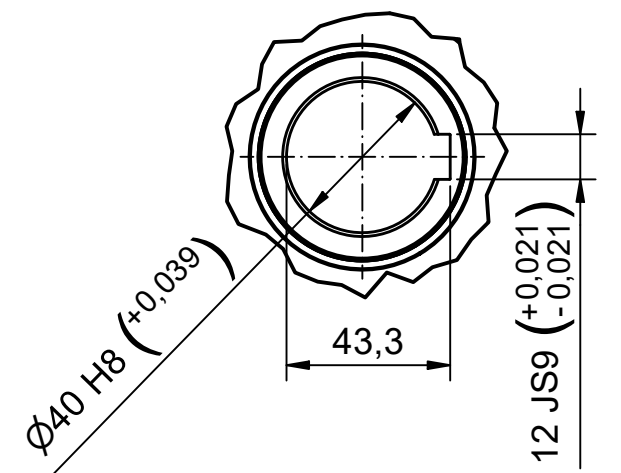
Configuration	
Description	Property value
Type	Compacta AG160
Mains	Three-phase current
Mains frequency	50 Hz
Y-Connection	Yes
Supply voltage	230 / 400V AC
Supply connection	3 x 400V AC
Output speed rpm	8,3 min ⁻¹
Output torque in Nm / Duty cycle (ED) in %	720 Nm / 60%
Self locking	No
Ratio	339 : 1
Lubrication	TRIBOL 800/680
Protection class	IP54
Motor rating	1,1 kW
Current value	2,5 A
Equipment	
Spring applied brake 2 Nm / 24 V DC	



Terminal box (limit switch housing without a switching mechanism).



Detail B
Through-going hollow shaft
with keyway



Bezeichnung / designation			 Franz Morat Group
Compacta AG160 Induction Motor			
Datenblatt / technical datasheet			Framo Morat GmbH & Co. KG Franz-Morat-Straße 6 D-79871 Eisenbach www.framo-morat.com
10000000000168640			
Artikel Nr. / article no. 6-160-AG-0008			
gezeichnet / drawn	Datum / date 27.02.2024	Name / name mwid	